



the VOICE

July and August 2024

Growing Together in Christ to Love and Serve All People

What's Inside...

- Calendars..... 14-15
- Congregation Council.. 8-10
- Discipleship / Children / Youth and Family
- Ministries 3
- ELCA13
- Fellowship 4-6
- Graduates! 6
- Health and Wholeness..... 7
- JEDI 6
- Ministry Team 19
- Northwest Washington Synod.....12
- Outreach and Servant Ministries 16-19
- Pastoral Acts.....11
- Semi-Annual Meeting11
- Serving Our Community . 19
- Snippets of Gratitude11
- Worship and Music..... 2

The Church is Dynamic; Our Mission to Serve Jesus is Constant

*We have no mission but to serve in full obedience to our Lord;
to care for all, without reserve, and spread his liberating word.*
ELW Hymn 729

As I write this, the sound of construction is literally right outside the front door of my apartment. I'm on the ground floor and, apparently, the staircase leading to the 2nd floor needs to be replaced so that it matches the recent refurbishment of the building's façade. I hadn't noticed the mismatch – and I'm pretty sure none of the other residents did, either – but as long as the finished product is structurally sound, that's all that matters.

This work brings to mind the work that we're doing with our partner congregations building a new future for ourselves. We aren't doing it for aesthetic reasons but, rather, to more closely align with what the church is becoming even though that has yet to be fully revealed. And while this type of work isn't loud like typical construction, it can disrupt existing systems and that isn't necessarily a bad thing. In the church, these types of disruptions prompt us to examine and closely consider some of the ways we've done things and ask what can change, or should change, or be let go of altogether.

Our current areas of focus are Administration, Governance, and Missional Engagement. A fourth area, Children and Youth Ministry, is also in process and it includes congregations outside of our conference. While much of this work is currently happening behind the scenes and will take time to implement, the Missional Engagement group is identifying the "low hanging fruit" that will allow us to more concretely work together now. They are gathering information about outreach/inreach events and activities in each of our congregations, and crafting ways to communicate them to expand participation beyond each individual church. Working together, our ministries will have a stronger impact in our community and, ultimately, bring our congregations closer together as we move forward.

In some ways, the future church is already here. But it will never be fully formed because, like its people, the church is dynamic. A healthy church constantly re-examines itself and seeks new opportunities to shape ministry and serve its community in Jesus' name. It recognizes that, no matter what else changes, our mission to serve Jesus is constant.

With peace,
Pastor Lara ☮

Sunday Worship
10:00 am
In-person
and Livestream

Masks are optional for in-person worship.
Visit salc.church/media for livestream worship.



BBQ with PorchLight Friends

Saturday, **June 29, 5:00 pm**
Gather with the men from PorchLight's Rotating Shelter.
See page 4

Ice Cream Sundae Sunday

Sunday, **July 7, 11:15 am**
Enjoy a sweet treat following worship!
See page 4

Vacation Bible School

Monday-Friday,
9:00 am - 12:00 pm
Three week-long opportunities
July 15-19
July 22-26
July 29 - August 2
See page 3

Worship and Music

Worship is at **10:00 am** on Sundays, both **in-person** and via **livestream**.

- Livestream: Visit salc.church/media to access the livestream on YouTube. If you have a Google account, we invite you to offer a greeting or comment in the chat window.

Worship Texts

Series: Samuel and Biblical Israel's History

July 7

1 Samuel 3:1-20
Psalm 139:1-6, 13-18

July 14

1 Samuel 8:4-20, 11:14-15
Psalm 138

July 21

1 Samuel 15:34--16:13
Psalm 20

July 28

1 Samuel
17:1-11, 19-23, 32-49
Psalm 9:9-20

Worship Videos and Sermon Notes and Recordings of past services can be found at SALC.church/sermons

Timber Ridge Worship

Thursday, **July 4** | **2:00 pm** |
Timber Ridge, Issaquah

Saint Andrew's and Our Savior Lutheran in Issaquah collaborate to provide monthly Communion services at Timber Ridge, a senior living community in Issaquah. Between our two congregations we have quite a few members who are residents there. The worship services are open to all staff and residents, and are held on the first Thursday of the month at **2:00 pm**. Each congregation alternates responsibility every other month for the service. 🕒

Be a Greeter!

It's fun! You get to chat with folks as they arrive for church and most importantly, welcome people to Saint Andrew's.

We want enough volunteers so that we can greet people at both doors each Sunday.

Sign up online at salc.church/signup-greeter-coffeehost for the date(s) you wish to greet. Or, contact Fellowship Coordinator Sherry Grindeland, sherry@salc.church or 425-746-2529, to sign up for a specific Sunday. 🕒



Outdoor Worship - August 25

Sunday, **August 25** | **11:00 am**
Ebright Creek Park, Sammamish

Save the Date!
On Sunday, **August 25**, we will participate in an outdoor worship service with the other eastside ELCA congregations. We will gather at **Ebright Creek Park in Sammamish for worship at 11:00 am**, and then enjoy a potluck picnic lunch afterward. More details coming soon.

Please note: there is **NO** worship service at Saint Andrew's that day. 🕒

Assisted Listening Devices for the Sanctuary

Assisted Listening devices are available to use for worship and other events held in the Sanctuary. The devices are in the Sound Booth; please ask the Sound Booth Operator if you would like to use one. 🕒

Communion Bread

We are always looking for **bread bakers** to make the bread used in Holy Communion.

We use the Luther Bread recipe, which has been updated to make it more clear and simple. The Luther Bread recipe and more information is online at salc.church/communion-bread, or contact Jay Baxter or Janell Erickson. 🕒

Bulletin Choices for In-Person Worship

There is an online option for accessing the worship bulletin. In the Narthex as you enter the Sanctuary, near the basket with the paper bulletins, there is a sign with a QR code on it. Scan the code with your device to be taken to the Saint Andrew's "Media" webpage, where you can access a PDF copy of the worship bulletin.

This option can be beneficial if reading the paper bulletin is a challenge (your device can be used to increase font size or brightness for readability) or for those who wish to reduce paper use.

Paper copies of the bulletin (regular and large print) are still available for in-person worship. 🕒

Healing Prayer during Communion

Healing Prayers during Holy Communion are offered on the third Sunday of the month. The next date is on Sunday, **July 21**.

Our Healing Prayer Ministers are ready to pray for your requests for healing (yourself or someone else), thanksgiving, or a stressful situation.

We have two Healing Prayer stations (kneelers), one on either side of the Sanctuary.

You will be asked if you would like to be anointed with oil at the end of the prayer. 🕒

Discipleship: Children / Youth and Family Ministries For Everyone!

Cluster Vacation Bible School

We are collaborating with the congregations in our cluster to have a rotating Vacation Bible School (VBS.) The same curriculum will be used at all locations. Join us for a fun week (or weeks) of learning about the love of God!

Saint Andrew's is directly partnering with Cross of Christ Lutheran Church and St. Luke's Lutheran Church to host the Bellevue area VBS.

Volunteers

We are in need of volunteers! Now is the opportunity to help. If you are interested in helping with the VBS in any way contact Doug Johnson, doug@salc.church or 425-746-2529, or email vbslutheran@gmail.com.

Sign up for VBS

VBS is open to children and youth pre-kindergarten through grade 6. VBS will be held Monday through Friday, **9:00 am - 12:00 noon**, the following weeks:

July 15-19 – Cross of Christ Lutheran Church in Bellevue

July 22-26 – Mt. Si Lutheran Church in North Bend

July 29-August 2 – Sammamish Hills Lutheran Church in Sammamish

To register for VBS visit <https://tinyurl.com/5n76tj6j>.

Contact vbslutheran@gmail.com for more information. 



Volunteers for Children, Youth, and Families

We did a lot in 2023-2024 with our children, youth, and families. From Youth Group to Cluster Family Game Nights, from Sunday Church School to Trunk or Treat, from mini golf to May Youth Weekend at Holden Village, and more; it was a full year that was only made possible through the hard work and dedication of many volunteers. This is where you come in.

We Need Your Help!

How can you help? You can sign up in the Narthex to help with an event/activity in September/October. You can reach out to Doug Johnson or the Discipleship Ministries Committee to ask about ways you can help. You can talk with your church friends and make recommendations. Most importantly you can pray and ask where God may be calling you to serve in our congregation. Thank you for your time and consideration and don't be surprised if you get a phone call soon.

Questions, please contact Doug Johnson.

Happy Birthday to You!

Happy Birthday to these youth who celebrate birthdays in July and August!



Kellen J.....	7/23
Sonja W.....	7/24
Luke D.....	8/5
Maia W.....	8/6
Mara B.....	8/22
Emily E.....	8/24


Sunday Education Classes Will Resume in the Fall

Sunday Church School, Youth education, and Forums will return in the Fall.

Recordings of past Forums can be found at salc.church/discipleship-hour-adults-page. 

For Youth in Grades 6-12

Upcoming Youth Events

We are working on partnering with other churches for some fun youth events this summer. Keep an eye on your email, social media, church bulletin, and more for information about future events as they develop. If you have questions, feel free to contact Doug Johnson. 

Fellowship

Sunday Coffee and Conversation

On Sundays throughout the summer, come **before and after worship** to enjoy coffee/tea/cocoa, goodies, and informal fellowship! ☮

Barbecue with PorchLight Friends

Saturday, **June 29** | 5:00 pm | Parking Lot

Celebrate Our New Friends!

Join us for a barbecue gathering with our PorchLight friends on Saturday, **June 29**, in the Saint Andrew's parking lot.

One frequent comment after we've hosted the PorchLight Rotating Shelter for men has been a desire to get to know our guests better.

Plus: we want to celebrate a fun month of working with the PorchLight men and their support team.

RESERVATIONS ARE REQUIRED FOR THIS EVENT. Sign up online at salc.church/porchlight-bbq.

We'll be barbecuing hot dogs and providing the buns, condiments, potato salad, and baked beans.

Everyone is asked to bring a 6-pack or 2-liter bottle of pop.

Also, when you make your reservation, sign up to bring a veggie tray, fruit tray, cupcakes, or cookies (enough to serve 8-10 people.)

Questions? Contact Fellowship Coordinator Sherry Grindeland, 425-746-2529 or sherry@salc.church. ☮



Ice Cream Sundae Sunday

Sunday, **July 7** | 11:15 am | Fellowship Hall

Get the Scoop on Our Second Annual Ice Cream Sundae Sunday!

Join us for an Ice Cream Sundae Sunday right after the 10:00 am worship service on **July 7**. You get to create your own sweet treat from an assortment of ice creams and toppings.

Volunteers Needed

Volunteers are Needed to help with Ice Cream Sundae Sunday, this sweet fellowship activity. Let Fellowship Coordinator Sherry Grindeland know if you can help: 425-746-2529 or sherry@salc.church.



Photo Directory

Thank you for your patience as you anticipate the arrival of our updated congregation photo directory!

Photos

The directory will be published in July. **Photos for the updated congregation photo directory are still welcome.** Please email a digital photo to Communications Specialist susan Hegedus, susan@salc.church, no later than Tuesday, **July 2**.

Contact Information

Beginning with this congregation directory, cell phone numbers for adults in the family will be included along with a home phone number, address, and email addresses for adults and children. You can opt out of including any information you wish to keep private. Please make sure we have your preference! Also, if you did not update your contact information at a photo appointment and anything has changed, please let us know. Send the information to info@salc.church or phone the office, 425-746-2529, no later than **July 2**. ☮



Devotional Books

We have received the *Christ in Our Home* and *The Word in Season* booklets for July/August/September, and they are now available in the Narthex. Pick them up whenever the building is open, or contact the church office, info@salc.church or 425-746-2529, if you would like a copy of either or both booklets mailed to you.

New: We also have a limited supply of large print devotional booklets available. Call the church office, 425-746-2529, if you would like one of the large print devotional booklets. ☮



Fellowship

Card Shower for Dave Marcrander

The family of Dave Marcrander requests your prayers for our father who recently moved to memory care. He is in the same community where he was previously, and so far is adjusting well to his new surroundings. He will no longer attend church in person but has been able to stream the service in his room which he enjoys. Saint Andrew's has been such an important of his life for so many years, as it was for our mother.

Dad turns 80 on **July 13** and we are surprising him with a card shower. If you would like to send a card with a memory or photo, we all would treasure them. You can mail or email them to:

Dave Marcrander
c/o Kerry Price-Duffy
(contact the church, 425-746-2529, for the address)

We've had to change his home phone number and he no longer has a cell phone. Unfortunately he's been the victim of scams. If you'd like to connect directly with him, please reach out to his daughter Kerry.

Lastly, we would also appreciate your prayers for us as we travel this same journey with our Dad that we did with our Mom in 2020. We're grateful we have each other.

Kerry Price-Duffy
Kristin Frossmo
David Marcrander, Jr. 

Dorcas Circle


Quilting

Dorcas Circle will meet at 9:30 am on Tuesdays, **July 2 and August 6**, in Fellowship Hall South to assemble and sew quilts for Lutheran World Relief (LWR). All members and friends of Saint Andrew's are welcome to join us. Sewing skills not required!

Other Ways to Help

There are many other ways that you can support our mission of making quilts for Lutheran World Relief, including the following.

- **Donate double, queen, or king size flat sheets that are in good condition, without any tears, holes, or stains.**
- Cut 11-inch quilt squares at home using washable fabrics. Dorcas has a lot of fabric that you can bring home from church to cut into quilt squares.
- Sew quilt tops at home. Quilts need to be 60 inches by 80 inches.
- Donate crochet or embroidery thread (any color) to tie quilts.
- *Note:* LWR does not accept quilts that have any flags or religious symbols.


Donations can be placed in the Dorcas basket near the elevator in the Narthex. If you have any questions please contact Linda Willenberg. 

Tuesday Morning Men

Every Tuesday | **8:30 am** | via Zoom

Tuesday Morning Men meet weekly for book and bible study. Join us for an interesting conversation, prayer, and fellowship!

Bring your Bible and coffee and join us on Tuesday mornings at **8:30 am!**

Contact the church office for information on joining this online gathering. All men are welcome!! 



Memorial Garden Vases

Saint Andrew's has vases available for use in our Memorial Garden.

The plastic vases are stored in a waterproof tub just behind the Columbarium wall. The vases have a stake on them, and can be pushed into the rocks or dirt in front of the engravings on the wall. The vases can hold a few flowers, a small bunch, or flags.

Once the flowers have passed their prime, they will be removed and the vase returned to the tub for its next use.

Contact Facilities Manager Kurt Lutterman, 425-746-2529 or kurt@SALC.church, for more information. 

Fellowship

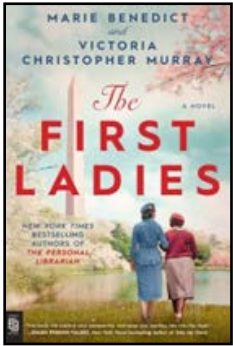
Women's Early Book Study (WEBS)

Wednesdays | 10:00 am - 11:30 am

Coordinator: Cheryl Jurrus

We ended our Spring session talking to the author of our book (*They Were Christians*), Cristobal Krusen, on Zoom. We had a list of questions and the discussion was lively. He seemed to appreciate that we found so much to study and discuss in his book. He told us about his new book (untitled) which will be published soon and even sent an email thanking us for the time together!

“Overcoming prejudice” is our theme for our next three sessions (Fall, Winter, Spring). The books we selected will deal with prejudice against Blacks, Muslims, “lower class”, and immigrants.



Fall 2024: *First Ladies* by Benedict and Murray

This is by the same authors as the *Personal Librarian*. It tells the story of Eleanor Roosevelt and her friend who was “colored” and influential in the NAACP.

Winter 2025: *The Faith Club* by Oliver

We have read this before, but we felt it is worth reading again “with new eyes”. Three women (Muslim, Christian, Jew) work together to write a children’s book about faith/tolerance. This was right after 9/11 when prejudice against Muslims was rampant.

Spring 2025: *The Wild and Heavenly Place* by Oliveira

It is about a family from Scotland who settled in the Newcastle area (south of Bellevue) when it was “wild and heavenly.” It is also about prejudice against “lower class” and immigrants.

Plan to join us for discussions on racism, prejudice, tolerance, history, and how our Christian faith guides us. We will meet starting in **September of 2024** on Wednesdays at **10:00 am**. All women are welcome. Come and share your stories.

Contact Cheryl Jurrus for more information. 

Graduates!

Congratulations and blessings to you as you continue your life's journey!

Graduates from High School:

Ian Maland:

Graduated from Mount Si High School. He plans on attending Walla Walla Community College in the fall, while working in his Grandma's Ski Shop in Walla Walla and staying with her.

Favorite memory of Saint Andrew's: Youth activities.

Nora June Lee:

Graduated with honors from Holy Names Academy in Seattle. She has been accepted at the University of British Columbia to study Psychology. Nora is the daughter of Chris and Meredith Lee and granddaughter of Dick and Dianne Lee.



JEDI

(Justice, Equity,
Diversity, and Inclusion)

JEDI Book Library

The JEDI Group has a display in the Narthex with a selection of books on Social Justice/Racism. **The books are available for free.** You are encouraged to take them home to read and bring back when you are done.



Bandanas

The JEDI Group has 3 rainbow Northwest Washington Synod Pride bandanas left, and are available for a suggested donation of \$8-10. JEDI purchased the bandanas from the synod for \$5, and the extra funds collected will go to purchasing more books for the JEDI book library in the Narthex. Contact Sherry Grindeland, sherry@salc.church or 425-746-2529, to get your bandana!



Health and Wholeness

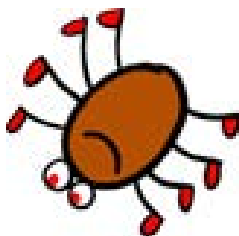
Don't Let a Tick Make You Sick!

by Jay Baxter and Cheryl Jurrus

Tick-borne diseases such as Lyme disease are not common in Washington, but they do occur. The best way to prevent getting sick is to avoid tick bites. Ticks live in grassy, bushy, or wooded areas. When heading into tick habitat take the following steps to prevent disease:

Wear Repellent and Protective Clothes:

- ✓ Use an EPA-registered tick repellent.
- ✓ Wear light-colored tightly woven long pants and shirt.
- ✓ Tuck your pant legs into your socks and/or boots.
- ✓ Tuck your shirt into your pants.



Check for Ticks:

- ✓ Check yourself, your kids, and pets.
- ✓ Check around hair and ears, under arms, behind knees, around waist, and between the legs.

What to do if you find a Tick;

- ✓ Remove the tick as soon as possible to reduce your chances of getting sick.
- ✓ Use clean tweezers to grasp the tick as close to the skin's surface as possible and pull steadily upward.
- ✓ Clean the bite area with soap and water.
- ✓ Call your health-care provider if you feel sick within 1 month of the bite.

Lyme disease is the most common bug-borne disease in the U.S. Nearly half a million people in the U.S. are diagnosed with Lyme disease each year (cdc.gov/ticks). Symptoms can include a rash, fever, headache, joint pain, or body aches. Lyme can cause inflammation of the heart or brain, but it can be treated early with antibiotics.

Other tick-borne diseases are alpha-gal syndrome and West Nile virus. Protect yourself against tick bites. Saint Andrew's Health and Wholeness Ministry Committee wants all of us to be healthy, especially this summer!

"Dear friend, I pray that you may enjoy good health and that all may go well with you, even as your soul is getting along well." 3 John 1:2



KnitWits

Saint Andrew's KnitWits (Knitting as Witnesses) is a fellowship group whose primary mission is to provide items of comfort that are knit or crocheted. Their on-going projects include prayer shawls, baptismal blankets, lapghans, baby blankets, baby booties, chemo caps, hats, wash cloths, sweaters, and scarves. The work of the KnitWits' hands keeps many people warm and reminds them that someone cares.

The KnitWits meet in-person on the third Sunday of each month following worship. The next meetings are Sundays, **July 21 and August 18**, at **11:15 am**, in the *Conference Room*. All are welcome! Contact KnitWits coordinator Dianne Chong for more information. 🙏

Heartwarming

Submitted by Terri Anderson on behalf of Health and Wholeness Ministry

Linda Willenberg shared an article (including video) she received from Lutheran World Relief (LWR) to the Health and Wholeness Ministry Committee. We felt it was important to share with all. What follows is a summary.

Following the collapse of the Francis Scott Key Bridge in late March, the ship Dali and ten other cargo ships and crew were trapped inside Baltimore Bay, unable to leave for 4-6 weeks as the channels were closed. This included hundreds of seamen. In addition, the seafarers were unable to leave their ships as they lacked visas.

Reverend Joshua Messick, an Episcopalian Chaplain, is executive director of Baltimore's International Seafarers' Center. They became the primary point of contact for aid and support of the stranded sailors. Local organizations donated water, food, and supplies. In addition LWR, whose headquarters are based in Baltimore, donated 150 personal care kits and quilts. Reverend Messick states the sailors were overcome with joy and gratitude. He states, "one would have thought they were receiving a bar of gold when the kits were distributed." He said the towels were particularly appreciated. They were equally grateful for the quilts. One sailor from Singapore was anxious to get home to his wife and newborn son. He vowed to wrap his baby in the new quilt.

Neighbors helping neighbors is a critical part of God's work, isn't it? Did you know LWR quilts and health kits (plus baby care kits and school kits) are distributed to 14 countries? They are Angola, Congo, Dominican Republic, Ecuador, Guatemala, Honduras, Liberia, Mali, Sri Lanka, Tanzania, The Gambia, Turkey and Ukraine.

Thanks be to God! 🙏

A Reminder: Covid is Returning!

Remember our first line of defense against disease is frequent handwashing. Please use plenty of hot water and soap and don't forget your finger nails. 🙏

Congregation Council

(Vice-) President's Corner

from Tom Getzinger, Congregation Council Vice-President

As Council President Carolynn Ferris has been traveling for a few weeks, she asked if I would write something up for *the VOICE* to keep everyone informed on important things happening on Council. I gladly agreed. I will say, though, that much of this came from her last President's Report to the Council.

Imagine Housing Memorandum Of Understanding (MOU)

The Housing Task Force has been working with Imagine Housing to develop an MOU that outlines expectations for both Imagine and Saint Andrew's should an affordable housing project proceed. The terms are non-binding – we are not obligated to go through with the project. But it does give Imagine enough certainty to begin to spend money to get a soils report, clarify City requirements, do a traffic study, and other tasks associated with the pre-development work.

The MOU was reviewed by Michael Herbst, an attorney who is a member of Saint Andrew's. All Task Force members are comfortable with the terms. They asked Council to approve the MOU on behalf of the congregation. In June, Council voted to approve the MOU. This allows both Saint Andrew's and Imagine Housing to take the next steps toward this exciting opportunity.

The next big step in this process will be a vote at the Annual Congregation Meeting in January on whether to proceed with this project. Leading up to that vote, please watch for opportunities from the Housing Task Force to learn the details of the project as they become clearer.

Silver Oak Montessori School

As Carolynn mentioned in last month's *VOICE*, the Council is continuing its investigation into leasing classroom space to Silver Oak Montessori School, starting in September. So far, what we have heard back from the city of Bellevue has been very encouraging. Unlike the previous opportunity we considered with Emerald Heights Academy, what we have heard is that the permitting process for Silver Oak would be much simpler and would not require the many improvements to the facility that would have been needed for Emerald Heights.

We are still evaluating the insurance impact of hosting Silver Oak. And we haven't yet discussed the lease rate. While it isn't anticipated this would be a huge revenue stream for Saint Andrew's, it would be supportive of our mission, and only makes sense if it isn't a financial loss.

As Carolynn mentioned last month, the decision for the Executive Committee to negotiate a lease is up to the Congregation and will be voted on at the Semi-Annual meeting. In fact, it will have been voted on by the time this newsletter comes out. [*editor's note: see page 11 for a summary of the Semi-Annual Meeting.*] The Executive Committee will be moving forward based on the will of the Congregation, as expressed in that vote.

Saint Andrew's Insurance

We were informed by Church Mutual in late March that our insurance was not going to be renewed. We were one of many congregations, locally and nation-wide, that were impacted as many insurance companies struggled with how to deal with a very challenging last year.

John Nelson, chair of the Building and Property committee, worked very diligently on finding new insurance. Up until late May, he thought he had a plan lined up. When that fell through at the last minute and we didn't know how long it would take to address, the Council decided the prudent thing to do was to close the facility.

Fortunately, again through John's hard work, we did manage to get insurance by June 1. While it was great to know we didn't have a period during which we were uninsured, it did take a few days to re-open everything. On June 2, I attended Sunday service at Cross of Christ, where I saw several other Saint Andrew's members. I heard there were also many members at St. Luke's. It was wonderful to know our fellow congregations were there to help in our time of need.

The new insurance was rather expensive, though. The premium is roughly four times what the old premium was, and the deductibles are roughly three times as much. John Nelson continues to look at other options and will present them to the Council as they become available.

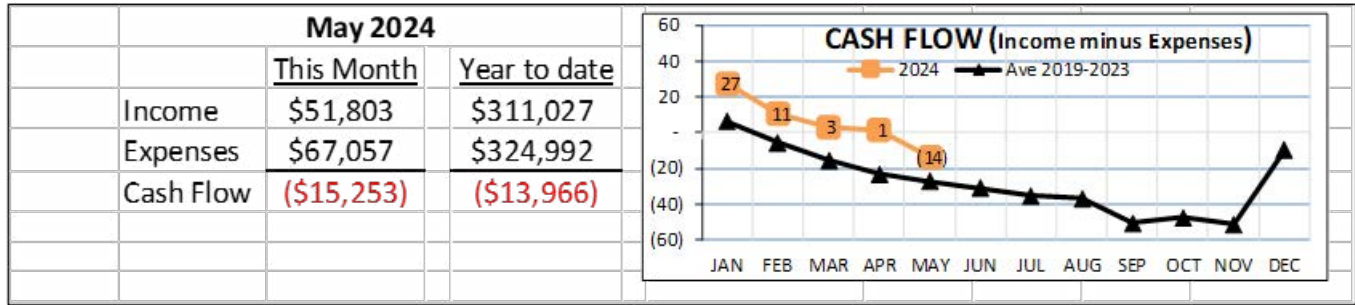
We are so blessed to have John here for everything he has done and everything he continues to do.

Yours in Christ, Tom Getzinger 

Congregation Council

Treasurer Note\$

from Bill Brueggemann, Congregation Treasurer



Comments

As of May 31, cash flow for the year is negative (\$13,966) (more money spent than received). This is similar to past years; however, we have a new challenge in 2024 and that is the increased insurance premiums that will need to be paid starting in June.

These new insurance premiums will increase budgeted expenses by \$22.3K for June to December 2024. Extraordinary giving will be needed to make up for the current deficit plus pay for the added insurance expenses.

Summer months are often low-income months. Please consider making your pledged donations now to reduce the large deficits we often experience during this time of year.

You may contribute in many ways:

- Ask your bank to automatically send a check periodically to Saint Andrew's.
- Donate from your bank account or credit card by going to salc.church/giving-options and selecting the "Tithe.ly Online Giving" button. NOTE: a processing fee is charged for electronic transactions (the church will pay this or you can opt to cover the fee.)
- Mail or drop off cash or checks to the church.
- On Sundays, you can drop cash or checks into the offering plate.
- Transfer shares of stock or required IRA distributions. Please contact Bill Brueggemann for the necessary forms.

Please contact me at bill@salc.church if you have any questions. 📧

Insurance Wrap-Up

In our communications in late May-early June about our insurance situation, we mentioned that the number of claims we've made in the last few years was a factor in our policy not being renewed and the higher cost of premiums going forward. While that is true, Saint Andrew's is not an isolated case.

Even before we were notified that our insurance policy wouldn't be renewed, we knew that hundreds of churches across the country are being affected by decisions in the insurance industry. Margaret Santjer, a member of our congregation, passed along these links to articles that share just how widespread, and sometimes random, these decisions are. We wanted to share them here to assure you that no one is at fault, and we were not singled out:

- *Insurance Cancellations Wreak Financial Challenges For Churches*: <https://religionunplugged.com/news/2024/1/25/flood-of-insurance-cancellations-wreaks-financial-challenges-for-churches>
- *Churches across America face insurance turbulence | Insurance Business America*: <https://www.insurancebusinessmag.com/us/news/breaking-news/churches-across-america-face-insurance-turbulence-488814.aspx>
- *Insurance company drops San Diego church's policy after viewing satellite images*: <https://www.firstcoastnews.com/article/news/local/insurance-company-guide-one-drops-church-policy-satellite-images/509-f752ffba-b27a-4667-be82-f8c5ad4ee355>



Congregation Council

At the June 10 Congregation Council Meeting....

Pastor Lara led a “Dwelling in the Word” devotion on Colossians 3:12-17.

President’s Report: See Vice-President’s Tom Getzinger’s “(Vice-) President’s Corner” report on page 8.

Pastor Lara Forbes’ Report: Pastor Lara shared information regarding nationwide insurance issues for churches. See “Insurance Wrap-Up” on page 9.

Finance: See Treasurer Bill Brueggemann’s “Treasurer Notes” on page 9. In addition, **the Council approved a request to spend \$150 from undesignated memorial funds to purchase oil stocks used during Healing Prayers.**

Insurance: John Nelson shared information about Saint Andrew’s insurance.

Housing Project:

- The Housing Project Task Force has visited other Imagine Housing properties at St. Luke’s, St. Margaret’s, and Velocity to gather information.
- Members of the Task Force attended a class with the City of Bellevue to understand more about housing projects.
- **The Council approved a Memorandum of Understanding that outlines expectations for both Imagine and Saint Andrew’s should an affordable housing project proceed.** See “(Vice-) President’s Corner” report on page 8 and visit salc.church/housing-project for more details.

Silver Oak Montessori School:


- Information is being gathered about a potential lease of classrooms to Silver Oak Montessori School.
- John Nelson has inquired about potential additional insurance costs associated with having the school on site. He has not received an answer yet.
- The congregation needs to authorize the Executive Committee to proceed with exploring the request and negotiating a potential lease. A vote will be taken in the June 23, 2024 Semi-Annual meeting.

Communication:

- Susan Hegedus’ last day of employment will be August 31.
- Johannes Grad is working with Heidi Francis on the transition. Saint Andrew’s members will be invited to be a part of the communications transition conversation.

Committee Highlights:

- The Finance Committee has been discussing whether internal audits are needed, given current reporting and scrutiny of finances.
- Stewardship: Chair Kit Bowerman is seeking ideas for stewardship and people to help. Contact Kit if interested.

Packets containing minutes from Council meetings and reports from all committees are available to review in the church office and by request. Contact the church office, info@salc.church or 425-746-2529. 

Congregation Council, Committees 2024

Committee	Council Liaison	Committee Chair	Committee	Council Liaison	Committee Chair
Executive	Carolynn Ferris, President Tom Getzinger, Vice President Johannes Grad, Secretary Bill Brueggemann, Treasurer Pastor Lara Forbes		Finance	Bill Brueggemann, Treasurer Juliet Zhang	Brady Kasper
Building and Property	Kit Bowerman	John Nelson	Health and Wholeness Ministry	Dave Vossler	Terri Anderson
Communications	Johannes Grad		Human Resources	Executive Committee	
Discipleship Ministries	Aaron Davis Ann Ross-Clarke Abby Kasper, Youth Rep.	Dana Nasby	Outreach and Servant Ministries	Dan Johnson	Dick Szabo
			Stewardship	Becca Piel	Kit Bowerman
			Worship and Music	Tom Getzinger	Sharon Gurtel

Semi-Annual Congregation Meeting

Semi-Annual Congregation Meeting Highlights

The Semi-Annual Meeting of the Congregation was held on June 23, 2024. At this meeting, the following topics were presented and discussed.

- **Silver Oak Montessori School:** Discussed a request from Silver Oak Montessori School to lease classrooms in South Hall.
The congregation voted to approve the following resolution: “If it is determined that Silver Oak Montessori School is able to utilize a portion of the South Hall for their school given a reasonable cost for any building upgrades, the Executive Committee is authorized to negotiate and execute a lease on behalf of the congregation.”
- **Insurance:** Heard an update from John Nelson about Saint Andrew’s current insurance status.
 - o Our previous insurance policy was not renewed. Saint Andrew’s is not unique - other churches in the area and nationwide have had the same experience.
 - o Saint Andrew’s now has separate policies and carriers for property insurance and liability insurance. Total premiums for these policies are approximately 4 times the cost of our previous policy. Our deductibles are also higher.
 - o Going forward, John Nelson will continue to explore other insurance options with the goal of lowering costs and acquiring one insurance carrier, preferably one that is knowledgeable in covering churches, for all policies.
- **Finances:** Finance Committee Chair Brady Kasper reported:
 - o Year-to-date income is lower than budget but about the same as this time in 2023.
 - o Expenses are below budget but that does not account for increases to insurance costs.
- **Housing Task Force** Update from Kit Bowerman:
 - o The purpose of the Task Force is to investigate the possibility of building affordable housing east of the main parking lot. Saint Andrew’s is working with Imagine Housing.
 - o In June 2024, the Congregation Council approved a Memorandum of Understanding (MOU) between Saint Andrew’s and Imagine Housing, a formal but non-binding agreement that outlines expectations of both parties as they continue to work together on this project.
 - o Kit presented a “milestone schedule” that listed project tasks, who will accomplish each task, and anticipated completion dates.
- **Bellevue Churches Collaboration** Update: Vice President Tom Getzinger presented an update on this effort by St. Luke’s Lutheran, Cross of Christ Lutheran, and Saint Andrew’s to collaborate and explore ways to “do church” better.
 - o There are three areas of focus: Administration, Governance, and Missional Engagement
 - o The current vision is an “Enterprise” congregation with multiple sites. Current worship and ministry practices continue and we’ll look for collaboration opportunities when appropriate. Efficiencies and cost-saving tools are also being explored.
 - o Other cluster churches (Sammamish Hills Lutheran, Our Savior Lutheran, and Mt. Si Lutheran) are being kept up-to-date on these efforts and invited to participate when and if they are ready.
 - o The Congregation Council approved a “Cluster Partnership Statement of Support” at its May meeting. That statement can be found in the June 2024 issue of *the VOICE* and also at salc.church/church-collaboration
- **Youth and Family Volunteer Needs:** Discipleship Ministries Committee Chair Dana Nasby invited volunteers to participate in youth and family activities. Sign ups for events in September/October are available or contact Dana for more information.



Snippets of Gratitude

KidVantage Diaper Derby

Saint Andrew’s did not place in its division in the 10th Annual Diaper Derby, but 40 participating companies and organizations collected more than 158,000 diapers, 51,000 diaper wipes, and contributed over \$9,000 to purchase diapers/wipes for kids living right here in our community! This keeps kids dry and healthy while removing a serious barrier to family stability.

That’s a win - thank you to all who donated!

Pastoral Acts

Baptisms

None

Weddings

None

Memorial Services

None

Committals

None

Northwest Washington Synod

From Bishop Shelley Bryan Wee

Published in *The Spirit*, July/August 2024 edition



Martin Luther writes in the Small Catechism:

What then does 'daily bread' mean? Everything included in the necessities and nourishment for our bodies, such as food, drink, clothing, shoes, house, farm, field, livestock, money, property, an upright spouse, upright children, upright members of the household, upright and faithful rulers, good government, good weather, peace, health, decency, honor, good friends, faithful neighbors, and the like. (Small Catechism, Fourth Petition of the Lord's Prayer)

In May, the six bishops of Region One (this includes the synods of Northwest Washington, Southwestern Washington, Alaska, Oregon, Northwest Intermountain, and Montana) were asked by the Region One hunger teams to write a joint letter requesting Congress to re-authorize the federal Farm Bill and to not cut important funding. The six bishops agreed to write this letter. After it was written and signed, the ELCA Advocacy staff in Washington, DC hand-delivered it to the House and Senate Agriculture Committees' leaderships and to the Representatives in each of the synod's respective states.

In June, there was a zoom event for all the Lutherans in the six synods to learn more about the Farm Bill and advocate for its continuation. This event was sponsored by the Region One hunger ministry teams, ELCA Advocacy, and Faith Action Network (FAN). Different speakers shared information, conversation happened, and the opportunity to write letters to legislators occurred.

As you might know, the six synods have over 560 congregations and tens of thousands of Lutherans from the states of Alaska, Idaho, Montana, Oregon, Washington, and Wyoming. These synods and states are not homogenous. The bishops are not homogenous. The congregations within each synod are not homogenous. The members of these congregations are not homogenous. We have differences of opinion at times, we have different priorities, we vote differently, we even shake our heads at things that don't make sense to us about one another.

And yet, in our diversity, we are also joined in the unity of Christ and the promises we have received. Deep in our bones, we know that we are saved by grace through faith. We hold fast to the truth that God loves us no matter what. We know this and trust this and hold this. And, because of this, together we are called out into the world – as followers of Jesus and as civic members of society.

We join together – over and over – to bring about change and protect the vulnerable. We come together beyond political difference because of what we have been promised and what we are called to do and to be. The example I've been using in this article is the Farm Bill. When we advocate for this bi-partisan Farm Bill, we are advocating for farmers, migrants, agricultural workers, Indigenous peoples, hungry children, the inclusion of those who have been historically excluded, and more.

But, of course, we come together far beyond this Farm Bill. We come together because God calls us to love others as God loves us. We work together for a just society. As German pastor and theologian Dietrich Bonhoeffer wrote, "Mere waiting and looking on is not Christian behavior. Christians are called to compassion and action, not in the first place by their own sufferings, but by the sufferings of their brothers and sisters, for whose sake Christ suffered." (*A Testament to Freedom*)

I am thankful and proud to be Lutheran because of all of you who feed and clothe, nourish and shelter, love and protect those who are the most vulnerable in this country and this world. It would take pages to list all the ways that you do this individually, in your congregations, in the synod, and in the wider church. Thank you for your advocacy and your care. There is, of course, more work to be done. And so let us together work towards the day when all may receive "daily bread."

If you would like to read the Bishops' letter you may click this link: <https://fanwa.org/wp-content/uploads/2024/06/Region-1-Bishops-Joint-Letter-Agriculture-Committee-Leaderships.pdf>

Bishop Shelley Bryan Wee | bishop@lutheransnw.org

Resources and Prayer Messages from the Synod

Our synod, the Northwest Washington Synod, has a variety of resources. Some are devotional, some share information about news and events around the synod. Visit <https://www.lutheransnw.org>

- Weekly updates and prayer messages and monthly newsletters: <https://www.lutheransnw.org/news>
You can also opt to have this weekly update emailed to you.
- Podcasts offered by individuals and congregations: <https://www.lutheransnw.org/resources/podcasts>
- Devotions for individuals and congregations: <https://www.lutheransnw.org/resources/devotions-worship>



From ELCA Presiding Bishop Elizabeth Eaton

Published in *Living Lutheran*, June 14, 2024

We Are Also Citizens

The airwaves are filled with contentious political discourse. And, as we get closer to the November election, it will undoubtedly get louder and coarser. Each side seeks to catch the other with questions that aren't designed for clarity and dialogue but to further its own agenda. Martin Luther's explanation of the Eighth Commandment in the Small Catechism—"We are to fear and love God, so that we do not tell lies about our neighbors, betray or slander them, or destroy their reputations. Instead we are to come to their defense, speak well of them, and interpret everything they do in the best possible light"—is barely visible in the rearview mirror.

But the "gotcha" question isn't a modern invention. "Then the Pharisees went and plotted to entrap him in what he said. ... Tell us, then, what you think. Is it lawful to pay taxes to Caesar (the emperor) or not?" (Matthew 22:15-17). We know the answer. Jesus told them: "Give therefore to Caesar the things that are Caesar's and to God the things that are God's" (21).

This passage has been used to inform the relationship between the institutions of the state and the community of faith. In this relationship the authority of the state is real and respected—but limited. God's authority is acknowledged as ultimate and deserving of ultimate devotion and obedience, yet it doesn't necessitate withdrawal from or opposition to participation in civic life and its responsibilities. We Lutherans call this the doctrine of two kingdoms, and we understand that the church and the state, the spiritual and the temporal, are both established by God and are both part of God's twofold rule. Both church and state are good gifts from God.

Lutherans have been accused of congenital quietism. Our understanding of God's twofold rule and even the story about paying taxes in Matthew have been used to discourage participation in civic life. However, active participation in public life has been part of the Lutheran movement from its beginning. Lutherans don't withdraw from public life. In fact, the ELCA's constitution (<https://elca.org/constitution>) pledges us to "work with civil authorities in areas of mutual endeavor, maintaining institutional separation of church and state in a relation of functional interaction."


I have been voting for 51 years. I can't think of an election cycle more fraught and divisive than this one. People all across the political spectrum claim that life as we know it is on the line. It's not possible to agree to disagree—one must decide and put a stake in the ground. There is the potential for violence.

But division and violence don't have to be our inevitable future. On November 5, no matter the outcome, we will still be here together. Our church, our people, our congregations will still be here and will witness that unity doesn't mean uniformity; that what binds us together is new life in Christ; that the church—and our country—are bigger than our "tribe"; and that baptism proves that water is thicker than blood.

This is not "both side-ism." Based on Scripture and the Confessions (<https://www.elca.org/Faith/ELCA-Teaching/Scripture-Creeds-Confessions>) and forged through prayer, there are principles that aren't debatable: love, community, sacrifice for the common good, to name a few. Instead, we are free and forgiven in Christ so that even when we disagree on deeply held convictions, we can still see the other as someone for whom Christ died.

Something that is missed when reading the story of Jesus and taxes is what he reveals about God and the world God so loves. We focus on Caesar. If Caesar's image and title are imprinted on a base metal coin, a humanly created, literal graven image, where is God's image to be found? Human creatures—the living beings whom God created in God's own image, into whom God breathed the breath of life—are bearers of God's image in the world.

Dear church, our citizenship is ultimately in heaven. But we are also citizens of this country—this flawed, fractious, unequal, imperfect union. In U.S. political history, people have yearned and given their lives for what they had hoped for—democratic life for the sake of the flourishing of all. One of the ways we serve our neighbor is to participate in civic life. Can we see Election Day as a unifying event when the whole country goes to the polls?

Vote. 



July 2024

For current information,
visit salc.church/calendar

Sunday	Monday	Tuesday	Wednesday	Thursday	Friday	Saturday
Jun - 30	Jul - 1 10a - 11:30a SALC - Health and Wholeness Ministry 1p - 2p SALC - Staff Meeting 4p - 5p SALC - Executive Committee 6p - 7p SALC - Finance Committee	Jul - 2 8:30a - 9:30a SALC - Tuesday Morning Men 9:30a - 12:30p SALC - Dorcas Circle	Jul - 3	Jul - 4 ALL DAY SALC - Independence Day/Office Closed OFFSITE 2p - 3p SALC - Timber Ridge Worship	Jul - 5 ALL DAY SALC - Office closed on Fridays	Jul - 6
Jul - 7 9a - 9:45a SALC - Coffee and Conversation 10a - 11a SALC - Sunday Worship 11:15a - 12:30p SALC - Ice Cream Sundae Sunday	Jul - 8 1p - 2p SALC - Staff Meeting 4:15p - 5:30p SALC - Congregation Council Meeting	Jul - 9 8:30a - 9:30a SALC - Tuesday Morning Men	Jul - 10 1p - 2p SALC - Congregation Care Team	Jul - 11	Jul - 12 ALL DAY SALC - Office closed on Fridays	Jul - 13
Jul - 14 9a - 9:45a SALC - Coffee and Conversation 9a - 4p SALC - JEDI Ministry Committee Meeting 10a - 11a SALC - Sunday Worship 12:30p - 1p SALC - Virginia 'Ginny O'Connor Committal	Jul - 15 OFFSITE 9a - 12p SALC - VBS@Cross of Christ Lutheran Church 9am-12:pm 1p - 2p SALC - Staff Meeting 7p - 8p SALC - Discipleship Committee Meeting	Jul - 16 8:30a - 9:30a SALC - Tuesday Morning Men OFFSITE 9a - 12p SALC - VBS@Cross of Christ Lutheran Church 9am-12:pm	Jul - 17 OFFSITE 9a - 12p SALC - VBS@Cross of Christ Lutheran Church 9am-12:pm	Jul - 18 OFFSITE 9a - 12p SALC - VBS@Cross of Christ Lutheran Church 9am-12:pm	Jul - 19 ALL DAY SALC - Office closed on Fridays OFFSITE 9a - 12p SALC - VBS@Cross of Christ Lutheran Church 9am-12:pm	Jul - 20
Jul - 21 9a - 9:45a SALC - Coffee and Conversation 10a - 11a SALC - Sunday Worship 11:15a - 12:15p SALC - KnitWits (Knitting as Witnesses)	Jul - 22 OFFSITE 9a - 12p VBS @ Mt. Si Lutheran Church 1p - 2p SALC - Staff Meeting 7p - 8:30p SALC - Outreach and Servant Ministries	Jul - 23 ALL DAY SALC - Sophia Way Lunch food dropoff 8:30a - 9:30a SALC - Tuesday Morning Men OFFSITE 9a - 12p VBS @ Mt. Si Lutheran Church 7p - 8p SALC - Building and Property Committee	Jul - 24 OFFSITE ALL DAY SALC - Sophia Way Lunch OFFSITE 9a - 12p VBS @ Mt. Si Lutheran Church 7p - 8p SALC - Racial Justice Group/JEDI	Jul - 25 OFFSITE 9a - 12p VBS @ Mt. Si Lutheran Church	Jul - 26 ALL DAY SALC - Office closed on Fridays OFFSITE 9a - 12p VBS @ Mt. Si Lutheran Church	Jul - 27
Jul - 28 9a - 9:45a SALC - Coffee and Conversation 10a - 11a SALC - Sunday Worship	Jul - 29 OFFSITE 9a - 12p VBS @ Sammamish Hills Lutheran Church 1p - 2p SALC - Staff Meeting	Jul - 30 8:30a - 9:30a SALC - Tuesday Morning Men OFFSITE 9a - 12p VBS @ Sammamish Hills Lutheran Church	Jul - 31 OFFSITE 9a - 12p VBS @ Sammamish Hills Lutheran Church	Aug - 1	Aug - 2	Aug - 3

August 2024

For current information,
visit salc.church/calendar

Sunday	Monday	Tuesday	Wednesday	Thursday	Friday	Saturday
Jul - 28	Jul - 29	Jul - 30	Jul - 31	Aug - 1	Aug - 2	Aug - 3
<p>9a - 9:45a SALC - Coffee and Conversation</p> <p>10a - 11a SALC - Sunday Worship</p>	<p>10a - 11:30a SALC - Health and Wholeness Ministry</p> <p>1p - 2p SALC - Staff Meeting</p> <p>4p - 5p SALC - Executive Committee</p> <p>6p - 7p SALC - Finance Committee</p>	<p>8:30a - 9:30a SALC - Tuesday Morning Men</p> <p>9:30a - 12:30p SALC - Dorcas Circle</p>	<p>OFFSITE</p> <p>11a - 1p Congregations for Kids Backpack Prep</p>	<p>OFFSITE</p> <p>9a - 12p VBS @ Sammamish Hills Lutheran Church</p> <p>OFFSITE</p> <p>2p - 3p SALC - Timber Ridge Worship</p>	<p>ALL DAY SALC - Office closed on Fridays</p> <p>OFFSITE</p> <p>9a - 12p VBS @ Sammamish Hills Lutheran Church</p>	
Aug - 4	Aug - 5	Aug - 6	Aug - 7	Aug - 8	Aug - 9	Aug - 10
<p>9a - 9:45a SALC - Coffee and Conversation</p> <p>10a - 11a SALC - Sunday Worship</p> <p>11:30a - 3p SALC - Discipleship Ministries Committee 24-25 Kickoff</p>	<p>10a - 11:30a SALC - Health and Wholeness Ministry</p> <p>1p - 2p SALC - Staff Meeting</p> <p>4:15p - 5:30p SALC - Congregation Council Meeting</p>	<p>8:30a - 9:30a SALC - Tuesday Morning Men</p> <p>9:30a - 12:30p SALC - Dorcas Circle</p>	<p>OFFSITE</p> <p>11a - 1p Congregations for Kids Backpack Prep</p>		<p>ALL DAY SALC - Office closed on Fridays</p>	
Aug - 11	Aug - 12	Aug - 13	Aug - 14	Aug - 15	Aug - 16	Aug - 17
<p>9a - 9:45a SALC - Coffee and Conversation</p> <p>10a - 11a SALC - Sunday Worship</p> <p>11:30a - 3p SALC - Discipleship Ministries Committee 24-25 Kickoff</p>	<p>1p - 2p SALC - Staff Meeting</p> <p>4:15p - 5:30p SALC - Congregation Council Meeting</p>	<p>8:30a - 9:30a SALC - Tuesday Morning Men</p>			<p>ALL DAY SALC - Office closed on Fridays</p>	
Aug - 18	Aug - 19	Aug - 20	Aug - 21	Aug - 22	Aug - 23	Aug - 24
<p>9a - 9:45a SALC - Coffee and Conversation</p> <p>10a - 11a SALC - Sunday Worship</p> <p>11:15a - 12:15p SALC - KnitWits (Knitting as Witnesses)</p>	<p>1p - 2p SALC - Staff Meeting</p> <p>7p - 8p SALC - Discipleship Committee Meeting</p>	<p>8:30a - 9:30a SALC - Tuesday Morning Men</p>			<p>ALL DAY SALC - Office closed on Fridays</p>	
Aug - 25	Aug - 26	Aug - 27	Aug - 28	Aug - 29	Aug - 30	Aug - 31
<p>9a - 9:45a SALC - Coffee and Conversation</p> <p>10a - 11a SALC - Sunday Worship</p> <p>OFFSITE</p> <p>11a - 1p Outdoor Worship with Eastside ELCA Congregations</p>	<p>1p - 2p SALC - Staff Meeting</p> <p>7p - 8:30p SALC - Outreach and Servant Ministries</p>	<p>8:30a - 9:30a SALC - Tuesday Morning Men</p> <p>7p - 8p SALC - Building and Property Committee</p>	<p>7p - 8p SALC - Racial Justice Group/JEDI</p>		<p>ALL DAY SALC - Office closed on Fridays</p>	

Outreach and Servant Ministries

Our Core Ministries....

Core Outreach Ministries of Saint Andrew's are specific areas of ministry which congregation members are most involved in with various resources, including time, expertise, and financial resources. Our Core Outreach Ministries are:

- ~ Affordable Housing/Homelessness
- ~ Food Security
- ~ Christian Education non-profits
- ~ Local Ministries
- ~ Global Missions



Collection Emphasis for Hopelink

July

Hopelink often asks us for items that their clients desire, but don't usually get donated. For during the summer, the food bank is asking us for **condiments** that you would see at a BBQ. To be able to support the most families, they ask for items in small to medium sized containers (around 10 to 18 ounces – depending on the item).

So, during July we are collecting:

- Ketchup
- Mustard
- Pickles
- Relish
- Ranch dressing
- BBQ sauce



August

For August, Hopelink has asked us to help them gear up for back-to-school by collecting **granola bars**! Any size packaging is good for the granola bars. 📦



We also continue to collect **paper grocery bags**. Hopelink has an ongoing need for these.

The Sophia Way

The Sophia Way Celebrated Summer

Rain was **pouring down** on Sunday, June 2!

Not a problem for The Sophia Way ladies, though!

At the Redmond Shelter location, the women of both Helen's Place and Sophia's Place celebrated SUMMER!

They were able to "shop" for clothes, shoes, jewelry, haircuts, purses, manicures, and more! There were great BINGO games with loads of fun and prizes.

We were all treated to a summer barbeque of ribs, (grilled by Salt Church members), corn on the cob, and all of the "fixings"!

Lunch

Meanwhile, in July, WE at Saint Andrews' will be able to create a great summer meal for the ladies at Sophia's Place! On Tuesday, **July 23**, we will be collecting food items for a summertime lunch of burgers and salads, (to be served on **July 24**).

If you would like to donate food for the lunch, please contact Joyce Arnold.

Other Ways to Help

If you would like to donate items for the pantry at the Shelter, please contact Joyce Arnold.

Also, as always, you are **very** welcome to come to visit Sophia's Place on any Wednesday morning, when Joyce is working in the kitchen!

Let Joyce know you are coming!

Thank you and Blessings to you all!

Joyce Arnold 📦

Helping Hands Needed

Join us to prep new backpacks for the Congregations for Kids on Wednesday, **August 7**. Congregations for Kids provides backpacks filled with supplies for needy students in the Bellevue School District.

Our shift begins at **11:00 am** at Spiritridge Elementary in Bellevue.

Space is limited so RSVP to Fellowship Coordinator Sherry Grindeland, sherry@salc.church or 425-746-2529. 📦



Outreach and Servant Ministries

Ministry of the Month:

Ho! Ho! Ho! Help Us Celebrate Christmas Giving in July

The Saint Andrew's Family is celebrating Christmas early this year – in July!

Because of the overwhelming need at two of our favorite children's charities, **KidVantage** and **Lantern Hill**, we're collecting donations, toys, and clothing this month.

Tags on the Christmas tree in the Narthex suggest what items are needed.

Take an tag (or three or four or more) on Sunday and bring the items back the following week.

The best part: You don't have to wrap the gifts!

Read below for information on what is needed and what your donations mean for Lantern Hill and KidVantage.



Friends of Lantern Hill

Lantern Hill, Linterna del Camino, has one mission – to break the cycle of poverty in Mexico. The group has ELCA roots.

It works to supply struggling families with food resources and to help keep children in school.

An inter-generation group from Saint Andrew's (the "Mexico 12") went on a mission trip to Lantern Hill in 2019.

For Shana Nielsen, it was an eye-opening, life changing and amazing experience. She has since become a Board Member of Friends of Lantern Hill and is a member of our Outreach and Servant Ministries Committee.

"My trips to Lantern Hill have been inspirational and incredibly humbling. These children have so little, yet find joy in the simplest things; getting a new pair of socks for Christmas, playing soccer with their friends on a playcourt the size of our living rooms, or reading a new book that was donated to their school."

The needs are so tremendous and yet it takes so little to support the 100 students that are currently enrolled.

Our church has been supporting Lantern Hill since the return of our Mexico 12. "It doesn't take much," Shana said. "Even a small check will make a difference to the families in this poverty stricken area outside of Ensenada."

To support Lantern Hill, write a check to Saint Andrew's with "Lantern Hill" in the memo line. Here are some examples of how donations will help:

- **\$10** - buys enough food for 10 meals for students. This includes costs of food and staff to prepare.
 - **\$15** - 1 bus pass for 1 week to allow a student to get to High School or University.
 - **\$25** - 1 teacher's salary for 1 day
 - **\$25** - 1 student uniform per year
 - **\$50** - Water costs per week. This includes water for facilities as well as bottled water for drinking.
 - **\$100** - 3 weeks of electricity and internet for the program
 - **\$250** - 1 months rent on the 2 properties we need to rent for the program
 - **\$500** - University tuition for 1 student for 1 year
- *** All donations will go to supporting the kids and the program.

KidVantage

The Issaquah-based KidVantage, formerly known as Eastside Baby Corner, helps children reach their full potential tomorrow by providing their basic needs today.

KidVantage began by supplying under-served families with new babies with such as diapers, formula and baby clothes. As the Eastside has grown, so has the need.

Saint Andrew's members Liz Rudolph and Marie Bean volunteer at KidVantage. "All children, from infants to teenagers, need our help with clothing, shoes, jackets and toys," Liz said. "For many of these children a toy from KidVantage and a jacket may be the only toy they've ever had and the first jacket they've owned."

Currently the group is low on clothing and toys – a tough situation for summer when kids are home.

A recent influx of refugees from Somalia, Afghanistan, and Venezuela need children clothing of all sizes.

"The need," Liz said, "is great."

We will provide new toys for birthdays (and in preparation for Christmas) through the tags on the tree.

We will also collect new and gently used items to provide ongoing support for kids 0–12 years old.

KidVantage Wish List

- Toys
 - Board and Card games
 - Puzzles
 - Markers and crayons; coloring books
 - Stuffed toys and animals (Squishmallows are popular!)
 - Craft kits
 - Books; especially board books for small children
 - Legos and blocks
 - Dolls – including Barbies
 - Anything Pokemon
 - Toy cars
 - Jackets – raincoats and winterweight
 - Children's clothing of all sizes
- Most needed:
- clothing for boys size 12-14
 - children's pants 2T to 14
 - shoes, especially boys size 3Y, and 11 and 12C
- Umbrellas
 - Gloves and hats



Outreach and Servant Ministries

Lantern Hill, Mexico

by Shana Nielsen

Two very exciting events are occurring the month of July benefitting Lantern Hill and the children whose education and nutritional well-being are supported by the program located in Ensenada Mexico. **First**, for a second year in a row, our Outreach and Servant Ministries Committee is supporting “Christmas in July” with all donations supporting Lantern Hill and KidVantage. Throughout the month, our Giving Tree will be up in the Narthex, with darling ornaments noting various dollar amounts and what that money will go to. All ornaments represent operations and program needs necessary for the sustainability over the next several months. For those who like to purchase items, the reason all ornaments for Lantern Hill are dollar amounts is because sending actual items to Mexico becomes too cost prohibitive, as well as there is a high likelihood the items would not actually ever make it to their final destination. Examples of ornaments include \$10.00 = 10 meals for students - this includes cost of food and preparation, and for many of the 100 students, this is the one reliable meal for them each day. \$25.00 is one teacher’s salary/day, and \$100.00 provides 3 weeks of electricity and internet for the program. Your financial support is needed and is more appreciated than words can express. A check made to Saint Andrew’s with “Lantern Hill” noted on the memo line will ensure that 100% of your donation goes directly to Lantern Hill. Seeing this article in August? Weren’t able to get to church in July but are interested in donating? No worries! There are always a variety of ways to donate, including on the website (Instagram and/or Facebook at Friends of Lantern Hill), or write a check to Saint Andrew’s with Lantern Hill noted, and you can place it in our offering plate at any time.


Secondly, July 16-20, I will be attending the ELCA Youth Gathering in New Orleans, to share information about Lantern Hill while getting to meet with thousands of high schoolers from all over the U.S. and the world. “The Gathering is a place to broaden our understanding of God’s love, to pay attention to, advocate for, and care for our neighbors, and to know that as both saint and sinner we are loved.” I can’t think of a more inspirational and positive experience, and I am truly honored to get to participate. The intent is to share about opportunities at Lantern Hill and to hopefully build more partnerships like the one our church has with Lantern Hill. Please keep me in your prayers for safe travels. My prayers for my own experience include the words of Tammy Jones West, director for ELCA youth ministry and the Gathering; “...may [all] participants leave knowing that they matter, that they are loved and that they are sent out into a hurting world to love like Jesus.”

Feliz Navidad and Happy Summer!

Shana Nielsen

www.friendsoflanternhill.org


<https://www.facebook.com/FriendsofLanternHill>

<https://www.facebook.com/lantern.hill.7> 

MaaSAE Girls Lutheran Secondary School (MGLSS), Tanzania




This highlights a new **Pre-Form 5 Program** on campus which began in January. This bridges a 10-month gap between the end of their Form 4 exams (October) and the start of the Form 5 curriculum (July). This has been a time of uncertainty and anxiety about the students’ futures, especially if their exam results do not qualify them for further education. With the help of sponsors providing funds, many of the Form 4 students were able to take vocational training, including Animal Husbandry, Computer Science, Food Processing, and Tailoring. Vocational training is something common in Tanzania, but not in schools. This new program will ensure their safety and development while they wait for their exam results. Stay tuned for the next issue of *the VOICE* which will show the results of this program and those who qualified for Form 5. Praise God for OBA and sponsors willing to go above and beyond in their giving. (There are still 34 Form 1 students who need sponsors at MGLSS. Please consider donating, beginning a relationship with a girl through her educational journey.)

Visit <https://bootstrapafrica.org/> to learn more about Operation Bootstrap-Africa and its work. If you have questions, contact Jean Wahlstrom. 

Operation Bootstrap Africa Discovery Tours

Operation Bootstrap Africa (OBA) invites everyone to go on one of its Discovery Tours. Visit OBA projects including schools and clinics, embark on a safari, and engage in cultural activities. Due to demand, they are offering additional tour dates. Tours vary in cost and activities:

- **October 2024:** Focused around OBA missions, Form 4 MGLSS graduation, and safaris.
- **February 2025:** More elaborate, focusing on OBA missions, cultural experiences, and bespoke safaris.
- **April 2025:** More cost inclusive, focused on Form 6 graduation and service projects.
- **July 2025:** Focused on OBA medical missions, Nursing School graduation, and safaris.

Visit <https://bootstrapafrica.org/discovery-tours/> to learn more. If you have questions, contact Jean Wahlstrom. 



Outreach and Servant Ministries


Kafika House, Tanzania



KAFIKA HOUSE
Transforming childhood

The children continue to heal from the latest series of surgeries at all three of the KAFIKA sites: Moshi, Karatu, and in Ngaramtoni-Arusha (the original campus). Most of June has been spent moving the equipment and patients “home” to their place on the hill. The


administrative office will remain in Arusha town to facilitate communications, travel, and meetings with other organizations. Director Sarah Rejman compared one scene as similar to ‘ancient Israelites after crossing the Red Sea’, using many volunteers with trucks for moving equipment and busses carrying the children. Pray for their re-settlement plans in that neighborhood and the rebuilding of relationships with everyone locally. This means reconnecting with food deliveries, pharmacies, postal service, etc. They are very glad to be back, but it has also been a strain and a blessing for the staff and resources. God be praised!

Learn more at kafikahouse.org and friendsofkafikahouse.org. If you have questions, contact Jean Wahlstrom. 

Navajo Evangelical Lutheran Mission (NELM)

Said their Executive Director, Patterson Yazzie, in their last letter, thank you for your “Every act of your generosity (that) helps us further our mission.” Patterson, a child of the NELM ministry (he was actually born in their clinic and went to primary school there), expressed his thanks, pointing out, “Your gift (helps) keep the children fed throughout the year.” It enables us “... to hire and retain qualified teachers, program staff, cooks, and maintenance personal.”

All gifts, small and large, helps support safe vehicles, provide dependable refrigeration equipment for the entire community, bring water, maintain the buildings on five acres where faith and culture have long shown that new understanding can grow into justice and peace. They are grateful for 70 years of service to their community on that ‘holy ground’!

Please continue to pray for the people of this northern Arizona community. Visit <https://www.nelm.org> for further information, to donate, and to sign up for their regular newsletter. 



Saint Andrew’s Ministry Team

Church Phone: **425-746-2529**

The Reverend Lara Forbes, Lead Pastor

pastor@SALC.church | phone extension 12

The Reverend Timothy T. Weber, Shared-Time Pastor

timwebertt@yahoo.com

Dr. Will Simpson, Director of Music Ministries

will@SALC.church | phone extension 17

Doug Johnson, Director of Youth and Family Ministries

doug@SALC.church | phone extension 13

Sherry Grindeland, Fellowship Coordinator

sherry@SALC.church | phone extension 16

Susan Hegedus, Communications Specialist

susan@SALC.church | phone extension 15

Kurt Lutterman, Facilities Manager

kurt@SALC.church | phone extension 11

Mary Mills, Office Administrator

mary@SALC.church | phone extension 10

Quinlan Kasper, Facilities Set-up

Elaine Koga, Choir Accompanist

Ann Thorpe, Sunday Church School Coordinator

Joan Tweten, Kitchen Team

Vanessa Wilkie, Handbell Choir Director

Samaritan Center of Puget Sound

Dr. Neal Teng, Counselor

206-957-4708

Serving in Our Community

We have many in our congregation family who serve on boards and commissions in our community. Some of those who serve are:

Carolynn Ferris

Board Member, Imagine Housing

Chair, City of Bellevue Planning Commission

Tom Getzinger

Registrar, Performing Arts Festival of the Eastside

Judy Thiel

President, Eastside Music Festival Foundation

Sherry Grindeland

Board Member, Eastside Heritage Center

Matt Camrud

Past President, The Rotary Club of Bellevue

Bill Brueggemann

President, Bellevue Youth Choirs

Kurt Lutterman

Member, City of Bellevue Environmental Services Commission

Mary Mills

Tutor for K-12 students for the King County Library System

Karen Getzinger

Board Member, PFLAG Bellevue Eastside chapter

Please let us know how you serve in our community!

The due date to submit items for the next issue of
the VOICE is **August 19**.

Email submissions to Susan Hegedus, susan@SALC.church



2650 148th Avenue SE, Bellevue, WA 98007
 www.SALC.church
 425-746-2529

Address service requested

NON-PROFIT ORG.
 U.S. POSTAGE
PAID
 PERMIT No. 35
 BELLEVUE, WASHINGTON



Mission and Values

Mission:

Growing Together In Christ to Love and Serve All People

Values:

Worship: Responding to God's gift of Grace through Word and Sacrament, with praise, prayer and music. *Ephesians 5:18b-20, Romans 12:1*

Discipleship: Nurturing the growth of Christian faith in all ages as we learn from and follow Jesus. *Colossians 1:10, 2 Timothy 3:14-17*

Outreach: Serving and loving our neighbors with generosity and justice by sharing of our gifts from God. *Mark 10:43-45, Matthew 25:35-40*

Relationship: Living as a compassionate community sharing God's forgiveness and acceptance of all. *John 13:34-35, Colossians 3:12-14*

Sunday Worship Services | 10:00 am
 In-person and Livestream: salc.church/media

Church Office Hours
 Monday through Thursday | 9:00 am—3:00 pm

425-746-2529
<https://SALC.church> | info@SALC.church

Facebook: @salcbellevue AND @SALCFamilies
 Instagram: @salcbellevue AND @salc families
 YouTube: youtube.com/c/saintandrewslutheranchurch

Saint Andrew's is a **Reconciling in Christ** congregation. Living into our mission of growing together in Christ to love and serve all people, we welcome and include everyone, regardless of sexual orientation, gender identity/expression, race, culture, neurodivergence, ability, age, addiction, relationship status, economic circumstances, or other distinction. See our full welcoming statement at salc.church/about-us.



We Support:

